

# MONTHLY MEMBERSHIP PROGRESS REPORT

LOCATION AUSTRALIA

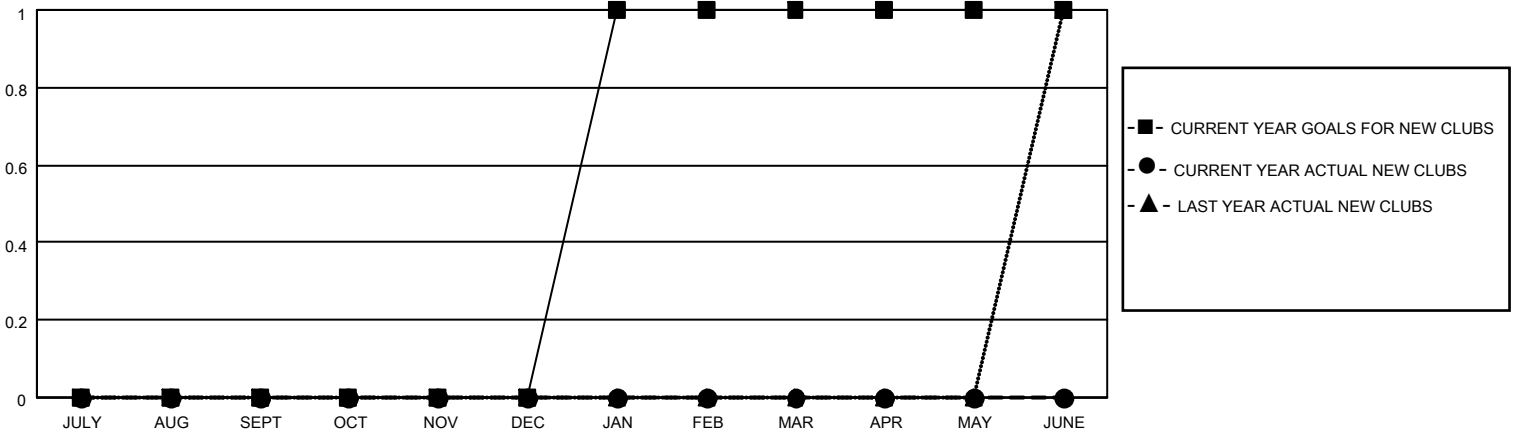
District 201V6

Results as of: 6/30/2022

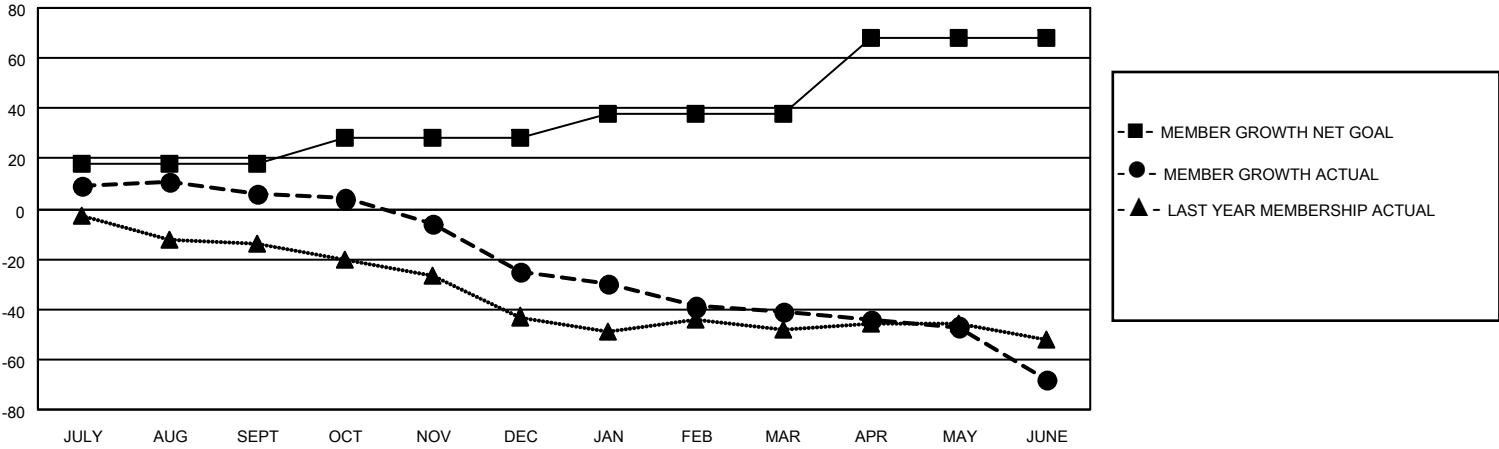
Clubs			
RESULTS FOR 2021-2022			
QUARTER	NEW CLUB GOAL	NEW CLUBS	DROPPED CLUBS
JULY/AUG/SEPT	0	0	1
OCT/NOV/DEC	0	0	1
JAN/FEB/MAR	1	0	0
APR/MAY/JUNE	0	0	0

Members			
RESULTS FOR 2021-2022			
QUARTER	MEMBER GROWTH NET GOAL	MEMBER GROWTH ACTUAL	DROPPED MEMBERS ACTUAL (including transfers)
JULY/AUG/SEPT	18	15	8
OCT/NOV/DEC	10	12	41
JAN/FEB/MAR	10	22	35
APR/MAY/JUNE	30	26	49

**GOALS AND ACTUAL NEW CLUBS CUMULATIVE**



**GOALS AND ACTUAL MEMBERS CUMULATIVE**



**DROPPED CLUBS: 2**

**28 CLUBS OF 57 ADDED 1 OR MORE NEW MEMBERS**

**GENDER DISTRIBUTION**

MALE	728 (68.23%)
FEMALE	339 (31.77%)
NON BINARY	0 (0.00%)
PREFER NOT TO ANSWER	0 (0.00%)

**DROPPED MEMBERS**

[CLICK HERE FOR CUMULATIVE MEMBERSHIP DATA](#)

DECEASED	22
CLUB CANCELLED	5
OTHER	106
<b>TOTAL</b>	<b>133</b>

TOTAL FAMILY UNIT MEMBERS	130
FAMILY MEMBERS PAYING HALF DUES	65